

www.agrosaw.com

WORLD'S WIDEST RANGE OF
POST-HARVEST SOLUTIONS IN
CLEANING, GRADING, SORTING
TREATMENT, HANDLING & STORAGE



 **AGROSAW**
PERFECTING POST HARVEST



Provides world class solutions in Cleaning, Grading, Sorting & Handling of all kinds of Seeds, Grains, Pulses, Spices, Oil Seeds, Fruits & Vegetables



Specializes in Designing, Manufacturing, Installing & Commissioning of complete range of Machines/Plants on Turnkey basis



Provides excellent After Sales Service and readily available Spare Parts



Provides Automation options for individual machines/complete plants



Exports to over 92 countries

'84

Established in 1984; is a manufacturer, supplier & exporter

SOYABEAN SEED PROCESSING PLANT
DESIGNED, SUPPLIED AND INSTALLED BY AGROSAW
AGROSAW
AGROSAW AGRICULTURAL INDUSTRIES PVT. LTD.
P.O. Box 102, Agrocity Company,
Agrocity Road, Ambala Cantt.,
Haryana (INDIA) Pin 150001



“Transforming Knowledge and Technology
into useful Products and Services
for the Post-Harvest Industry.”

SANJEEV SAGAR
MANAGING DIRECTOR

International Collaborations



DENMARK
Grain and Seed Cleaning and
Grading Machines



SWEDEN
Seed Treatment and
Coating Machines



UKRAINE
Grain Storage Silos, Continuous
type dryers, high capacity
material handling equipment



NEW ZEALAND
Horticulture cleaning &
grading machine



DENMARK
Suction Blowers and Aspirators
for Seeds and Grains



USA
Spiral Separator

SEED PRE-CLEANERS/GRAIN CLEANERS



PC - 2 (NB)

MODEL	CAPACITY	POWER (HP)
PC - 2 (NB)	2 TPH	5



PC - 3 (RB)

MODEL	CAPACITY	POWER (HP)
PC - 3 (RB)	4.5 TPH	3+1=4



PC - 5 (NB)

MODEL	CAPACITY	POWER (HP)
PC - 5 (NB)	6.5 TPH	4+1.5=5.5



PC - 7

MODEL	CAPACITY	POWER (HP)
PC - 7 W	9 TPH	4+1.5+0.5=6



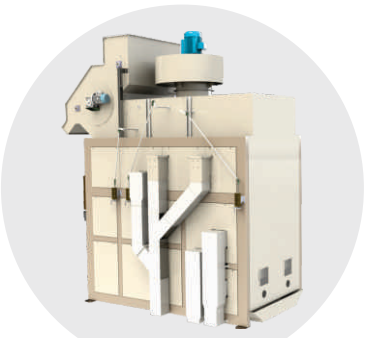
PC-8-R /PC-8-S

MODEL	CAPACITY	POWER (HP)
PC - 8 - R	9 TPH (on rice)	5+2=7
PC - 8 - S	10-12 TPH (on wheat)	7.5+2=9.5



MAXIMO - 25

MODEL	CAPACITY	POWER (HP)
MAXIMO-25	25 TPH	7.5+1.5+1=10 HP



MAXIMO - 50

MODEL	CAPACITY	POWER (HP)
MAXIMO-50	50TPH	10+2+1=13 HP

Post-Harvest Solutions in Cleaning, Grading and Handling of all kinds of Seeds, Grains, Spices, Pulses and Oil Seeds | Due to constant process



FINE CLEANERS



ULTRA

MODEL	CAPACITY	POWER (HP)
Ultra	150 Kg/hr	1+0.25=1.25



JUNIOR III

MODEL	CAPACITY	POWER (HP)
Junior III	600 Kg/hr	1



UC - 1

MODEL	CAPACITY	POWER (HP)
UC - 1	1 TPH	1



DELUX II

MODEL	CAPACITY	POWER (HP)
Delux	1.25 TPH	4



ZEN II

MODEL	CAPACITY	POWER (HP)
Zen II	3 TPH	5 Fan - 5 HP Sieve - 1 HP

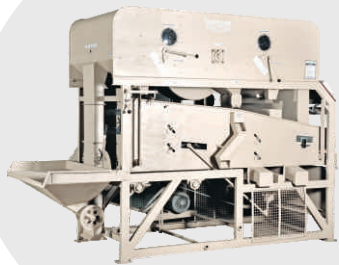


UC - 2

MODEL	CAPACITY	POWER (HP)
UC - 2	2.5 TPH	3+1=4

of research & development, all designs and specifications are subject to change without prior notice. Capacities mentioned are based on wheat.

FINE CLEANERS



SUPER

MODEL	CAPACITY	POWER (HP)
Super	8-10 Bags/Hr (Based on Coriander)	5



ALFA

MODEL	CAPACITY	POWER (HP)
Alfa 3 PF	3 TPH	$5+1.5+0.5=7$
Alfa 4 PF	4 TPH	$7.5+1.5+0.5=9.5$
Alfa 6 GF	6 TPH	$5+1.5+0.5+0.5=7.5$



SEED MASTER II

MODEL	CAPACITY	POWER (HP)
SM II PF	2 TPH	$4+1+0.5=5.5$
SM II 3 GF	3 TPH	$4+1+0.5=5.5$



CLASSIC - II

MODEL	CAPACITY	POWER (HP)
Classic - II	1 TPH	$1+0.5=1.5$



UC - 4

MODEL	CAPACITY	POWER (HP)
UC-4	4 TPH	6



SG - 3 - II

MODEL	CAPACITY	POWER (HP)
SG - 3 - II	5.5 TPH	$7.5+2=9.5$

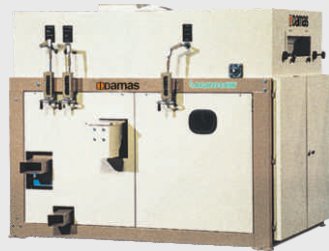


FINE CLEANERS



AGROSAW-DAMAS VIBAM

MODEL	CAPACITY	POWER (HP)
1026	10 TPH	7



AGROSAW DAMAS VIBAM - 1013

MODEL	CAPACITY	TOTAL POWER
1013	5 TPH	5 HP

ROTARY DRUM CLEANERS



RDC SERIES

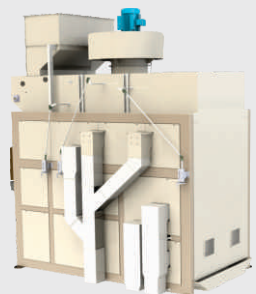
MODEL	CAPACITY	POWER (HP)
RDC - 25	25 TPH	$2+3+0.5=5.5$
RDC - 50	50 TPH	$3+5+1=9$
RDC - 75	75 TPH	$4+7.5+1.5=13$
RDC - 100	100 TPH	$5+10+2=17$

FINE CLEANERS



MAXIMO - 25

MODEL	CAPACITY	POWER
MAXIMO-25	8 TPH	$7.5+1.5+1= 10$ HP



MAXIMO - 50

MODEL	CAPACITY	TOTAL POWER
MAXIMO-50	15 TPH	$10+2+1=13$ HP



GRAVITY SEPARATORS



GT

MODEL	CAPACITY	POWER (HP)
GT	100 Kg/Hr	1+0.25=1.25



G1/G2/G4/G6

MODEL	CAPACITY	POWER (HP)
G - 1	0.7-1 TPH	3
G - 2	1.5-2 TPH	4+1=5
G - 4	3.5-4 TPH	7.5+1.5 = 9
G - 6	5-6 TPH	10+3 = 13



G4/G6 MAX MODEL

MODEL	CAPACITY	POWER (HP)
G6 (MAX)	5-6 TPH	FAN 10 DECK 3



AGROSAW DAMAS
GRAVITY SEPARATOR

MODEL	CAPACITY	POWER (HP)
ADG	8-10 TPH	15+1.5=16.5

INDENTED CYLINDERS



IC-V

MODEL	CAPACITY	POWER (HP)
IC - V	100 Kg/hr	0.5



IC-1 LS to IC-5 LS

MODEL	CAPACITY	POWER (HP)
IC - 1 LS	1 TPH	1x2
IC - 2 LS	2 TPH	2x2
IC - 3 LS	3 TPH	2x2
IC - 4 LS	4 TPH	3x2
IC - 5 LS	5 TPH	3x2



IC-1 to IC-10

MODEL	CAPACITY	POWER (HP)
IC - 1	1 TPH	1
IC - 2	2 TPH	2
IC - 3	3 TPH	2
IC - 4	4 TPH	3
IC - 5	5 TPH	3
IC - 6	6 TPH	3
IC - 10	10 TPH	5



DE-STONERS



NEGATIVE PRESSURE TYPE

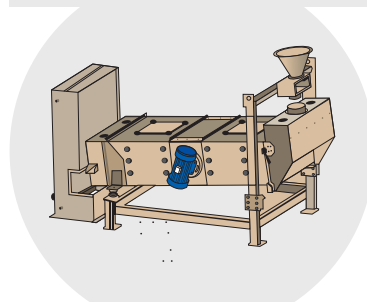
MODEL	CAPACITY	POWER (HP)
D6 - NE	3-6 TPH	7.5+0.5=8
D8 - NE	7-8 TPH	10+0.5x2=11
D12 - NE	9-12 TPH	12.5+0.5x2=13.5
D15 - NE	13-15 TPH	15+0.5x2=16



POSITIVE PRESSURE TYPE

MODEL	CAPACITY	POWER (HP)
D2 - PEX	1.5-2 TPH	0.5

VIBRO CLEANER



VIBRO CLEANER

MODEL	CAPACITY	POWER (HP)
VC 6	6 TPH	7.5
VC 8	8 TPH	7.5

MAGNETIC SEPARATOR



MAGNETIC SEPARATOR

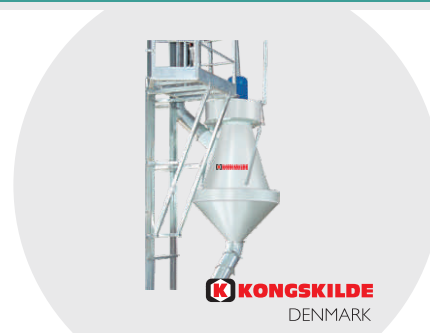
MODEL	CAPACITY	POWER (HP)
MS-2	2 TPH	1 + 0.25
MS-4	4 TPH	1 + 0.25
MS-6	6 TPH	1 + 0.25
MS-8	8 TPH	1 + 0.25

PENUMATIC CONVEYING OF GRAIN



Available in various models
Capacity from 5 TPH to 120 TPH

KONGSKILDE ASPIRATOR PRE CLEANER



KF

MODEL	CAPACITY	POWER (HP)
KF 12	12 TPH	1 HP
KF 20	20 TPH	2 HP
KF 40	40 TPH	7.5 HP
KF 60	60 TPH	10 HP



UNIVERSAL SEED TREATORS



UT SERIES

MODEL	CAPACITY	POWER (HP)	TANK CAP.
UT - 1	1 TPH	0.75+0.25=1	25 Ltr.
UT - 2	2 TPH	1+0.5=1.5	50 Ltr.

SLURRY SEED TREATORS



ST SERIES

MODEL	CAPACITY	POWER (HP)	TANK CAP.
ST - 1-RD	1 TPH	0.5	25 L
ST - 2-RD	2 TPH	1	50 L
ST - 4-RD	4 TPH	2	100 L

AGROSAW NOROGARD SEED TREATMENT & COATING MACHINES



BATCH COATING MACHINE

MODEL	CAPACITY	POWER (HP)
R - 534	3 TPH	4+0.5+0.25=4.75
R - 800	12 TPH	16



CONTINUOUS SEED TREATMENT MACHINES

MODEL	CAPACITY	POWER (HP)
R - 7	7 TPH	1+0.5+0.5=2
R - 15	15 TPH	4+1+0.5=5.5



BATCH SEED DRYERS



RECIRCULATING COLUMN DRYER

MODEL	CAPACITY	POWER (HP)
BCD-1	1 TBP	2
BCD-2	2 TBP	3
BCD-4	4 TBP	5
BCD-5	5 TBP	7.5
BCD-6	6 TBP	7.5
BCD-8	8 TBP	7.5



COFFEE DRYER

MODEL	CAPACITY	POWER (HP)
BD-Coffee1	1 TPB	5
BD-Coffee2	2 TPB	7.5



MULTI TRAY DRYER

MODEL	CAPACITY	POWER (HP)
BDM	1 TPB	3
BD-V	100 Kg/B	1



TRAY TYPE DRYER

MODEL	CAPACITY	POWER (HP)
BD - 1	1 TPB	2
BD - 2	2 TPB	3
BD - 4	4 TPB	5
BD - 6	6 TPB	7.5

WITH VARIOUS COMBINATIONS



Capacity ranges from 1 TPH to 5 TPH

VEGETABLE SEED EXTRACTION MACHINES



Capacity depends upon Vegetable & Fruit

ROUND SILOS



Round Silos 15 tons to 50 tons
Square Silos 1 tons to 15 tons



SUPPORT EQUIPMENT



BUCKET ELEVATORS

Available in Various Capacities



Z ELEVATORS

Available in Various Capacities



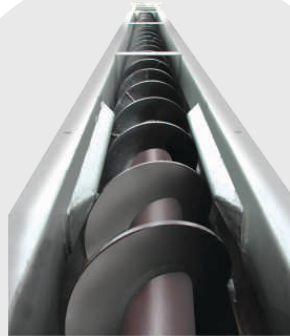
INCLINED BELT CONVEYORS

Available in Various Capacities



BELT CONVEYORS

Available in Various Capacities



SCREW CONVEYORS

Available in Various Capacities



CHAIN CONVEYORS

Available in Various Capacities



SUPPORT EQUIPMENT



DUMP HOPPERS

Available in Various Capacities



SURGE/HOLDING/BAGGING BINS

Available in Various Capacities



MIMIC TYPE PANEL

Available in Various Configurations



AUTO SLIDE GATES

Available in Various Capacities



WEIGHING & BAGGING UNIT

Available in Various Capacities



BAG STACKERS

Available in Various Capacities



PLANTS



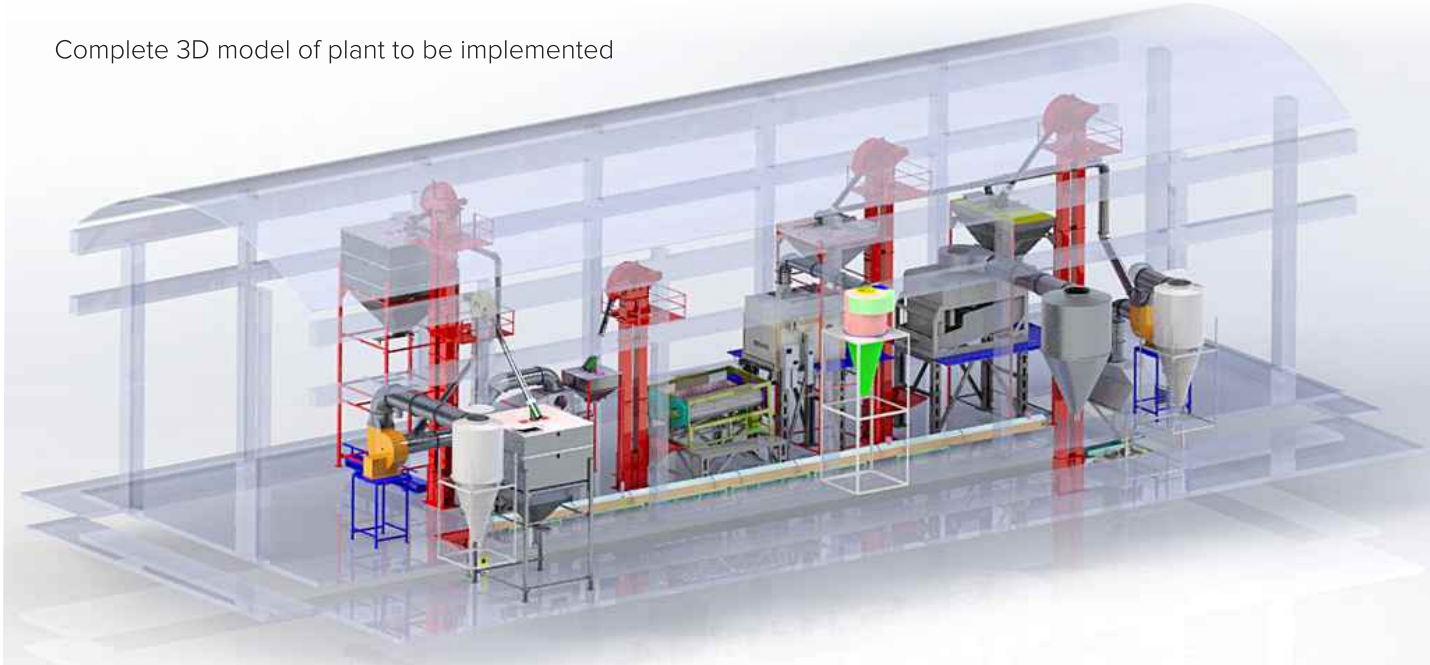
Seed Processing Plant: Capacity 8 TPH with Central Dust Aspiration System. Installed on raised platform

Agrosaws' strength lies in the integrating individual machines and build fully automated plants as per customer requirements | Due to constant process

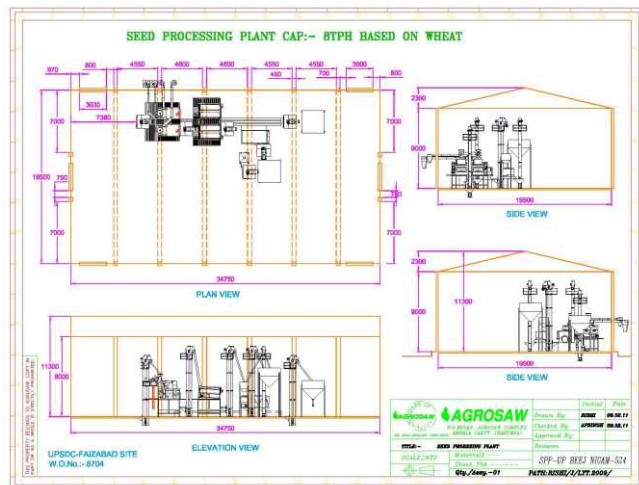


PLANT DESIGNS

Complete 3D model of plant to be implemented



2D of plant to be implemented



We also undertake the following projects:

1. Mini Rice Mills
2. Rice Mills
3. Mini Dal Mills
4. Dal Mills
5. Maize Cob Drying (from AEC, USA)
6. High Capacity Maize Sheller (from AEC, USA)

of research & development, all designs and specifications are subject to change without prior notice. Capacities mentioned are based on wheat.



Manufacturer | Supplier | Exporter
The one stop for all your post harvest needs



OSAW AGRO INDUSTRIES PVT. LTD.

 P.O. Bag 5, Agrosaw Complex, Jagadhri Road, Ambala Cantt., Haryana - 133001 India

 (+91) 171 2699354, 2699547, 2699167

 (+91) 171 2699018

 agrosaw@agrosaw.com

 www.agrosaw.com

 /agrosaw

 /agrosaw

 /agrosaw

 /agrosaw



ISO 9001 : 2008
ISO 14001 : 2004
OHSAS / IS 18001 : 2007
SA 8000: 2008

CE